

# ENVIRONMENTAL PROTECTION

Credit: Diffuse on Flickr

## Updating environmental policy (protection, hazards)

### WHAT ARE WE TALKING ABOUT?

Hazardous conditions can cause negative social, economic, and environmental impacts and lead to a major emergency or disaster. Prince George is susceptible to a variety of hazards including floods & ice jams, erosion & sedimentation, landslides, wildfires, atmospheric hazards and hazardous materials spills or emissions. The OCP includes statements and map designations for restrictions on the use of lands that are subject to hazards, and promotes settlement patterns that minimize risk to people and property.

### WHY IS THIS ACTION IMPORTANT?

Recent events including the 2007/08 Nechako River ice jam and flood have helped to remind us that the most effective and affordable approaches available for our community to reduce vulnerabilities and the potential for damages are land use controls and hazard mitigation such as flood proofing.

It has become critically important to plan with hazardous conditions in mind, as there is increasing development pressure within and adjacent to known hazardous areas, and uncertain consequences of climate change impacts to temperature and precipitation. Finally, we have a duty to protect public infrastructure and prevent or reduce damage to the natural environments, its ecosystems and diversity.

### WHAT MYPG GOALS ARE WE MEETING?

- A **safe community**, creating an environment where all citizens feel safe.

### HOW CAN THE CITY IMPLEMENT THIS ACTION?

The City is creating new hazardous condition designating mapping for the OCP that shows where hazardous conditions are likely to occur based on the most current information available. The OCP will also include objectives and policies designed to:

- 1) identify and alleviate hazardous conditions which restrict the use of land or pose a risk of injury or damage, and
- 2) protect against injury, suffering and the loss of life, and minimize property damage by prohibiting or regulating development on lands subject to hazardous conditions.

This can be achieved by:

- Considering hazards when designing and constructing any new development
- Avoiding hazardous areas where possible
- Prohibiting vulnerable development (e.g. schools, emergency services, public utilities etc) from being built in hazardous areas.



OFFICIAL COMMUNITY PLAN

September 2010 – Priority Directions

## CITY IMPLEMENTATION CONT'D...

- Completing site-specific hazard assessments before developing lands.
- Where development is presently located in a hazardous condition area, require setbacks and/or other hazard mitigation measures with any redevelopment.
- Ensuring hazard control measures are followed during construction.
- Requiring hazard assessments to be completed at the Neighbourhood Planning stage of development.
- Considering hazardous conditions when purchasing or selling City owned lands.
- Enforcing violations to the City provisions diligently and expeditiously in consideration of the consequence and severity of the hazardous condition.
- Updating the Zoning Bylaw to assist in policy implementation.
- Adopting policies for implementing risk reduction measures.
- Monitoring, evaluating, and reporting on our progress to achieve the OCP objectives for hazardous conditions.
- Working with community partners and individual property owners to increase awareness of hazardous conditions and encourage personal responsibility for the protection of life and property.
- Ensure the City's capital and operating budgets support hazard mitigation strategies.

## HOW WILL THIS AFFECT ME?

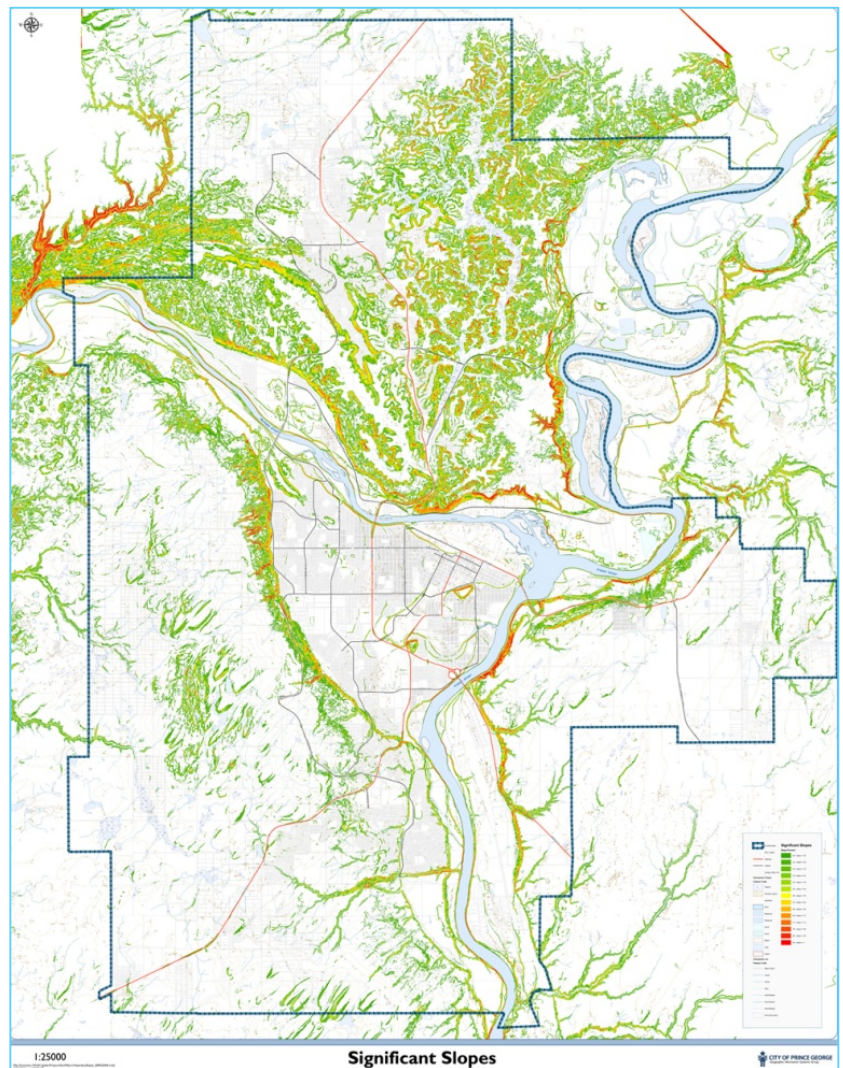
Although and OCP has no immediate effect on land use, it does impact Council's consideration of future bylaws and works. This means that land use change bylaws and City standards and capital investment needs to be consistent with the OCP. Additionally, new hazardous condition development permit areas are proposed which will increase the regulatory burden on developers within hazardous condition areas.

### Share your thoughts and ideas.

Well developed policy directions will help Prince George meet its goals for a healthy future for all citizens.

- Would you add anything to this policy direction?
- Would you change or remove anything?

Contact us at [mypg@city.pg.bc.ca](mailto:mypg@city.pg.bc.ca)



For more information: Long Range Planning  
City of Prince George, [mypg@city.pg.bc.ca](mailto:mypg@city.pg.bc.ca), (250) 561-7731

